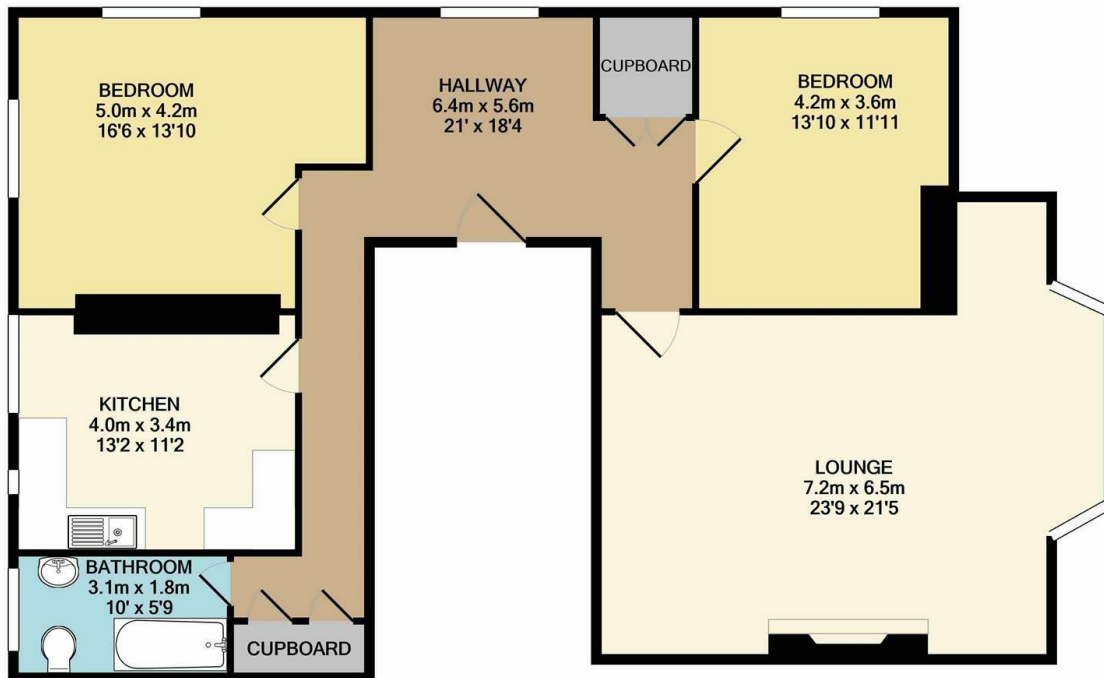


Flat 1, 9 Westwood, Scarborough, YO11 2JD

£675 Per Calendar Month

- FIRST FLOOR FLAT
- CONVENIENTLY LOCATED
- PERIOD FEATURES
- TWO DOUBLE BEDROOMS
- GAS CENTRAL HEATING
- AVAILABLE IMMEDIATELY
- SPACIOUS ROOMS
- LARGE KITCHEN



TOTAL APPROX. FLOOR AREA 112.5 SQ.M. (1211 SQ.FT.)
Measurements are approximate. Not to scale. Illustrative purposes only
Made with Metropix ©2019



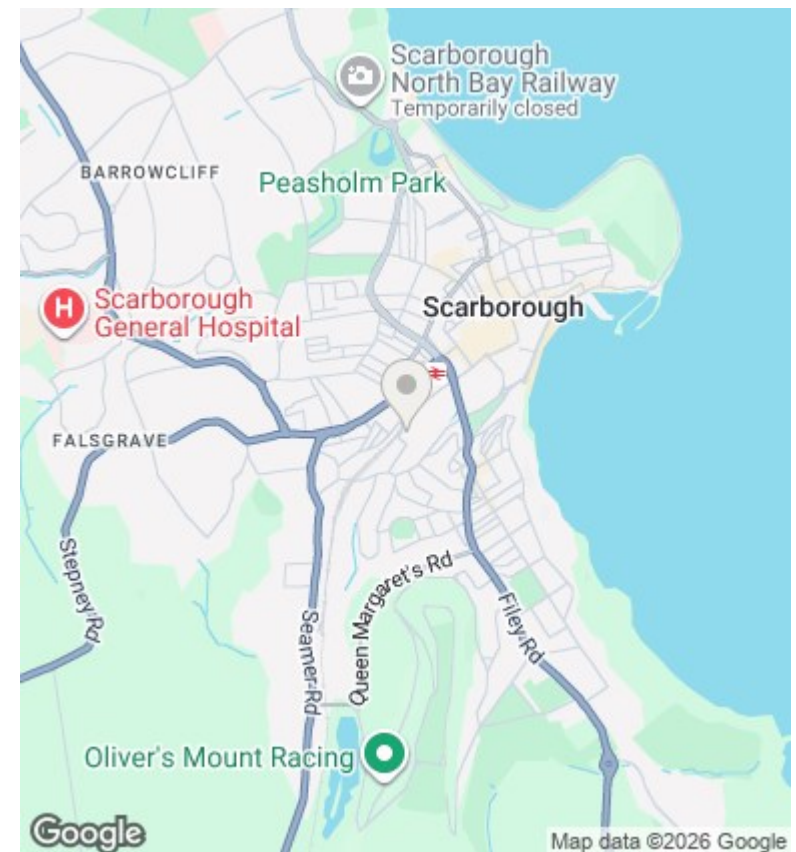
Viewings

Viewings by arrangement only. Call 01723 377707 to make an appointment.

Council Tax Band

EPC Rating:

D



Energy Efficiency Rating		
	Current	Potential
Very energy efficient - lower running costs		
(92-plus) A		
(81-91) B		
(69-80) C		78
(55-68) D	64	
(39-54) E		
(21-38) F		
(1-20) G		
Not energy efficient - higher running costs		
England & Wales		EU Directive 2002/91/EC